

INSTRUCTION MANUAL

POWER SOURCE

This unit uses one "AAA" battery.

LOCATIONS OF CONTROL

1. TIME/ALARM/CALENDAR/TEMP LCD Display
2. ALARM STOP/LIGHT/SNOOZE button
3. HR (Hour)/MONTH Button
4. MIN (Minute)/DATE Button
5. °C/°F Button
6. 12HR/24HR/YEAR Button
7. LOCK/ALARM SET/TIME SET/CALENDAR SET Switch
8. SNOOZE/ALARM ON/ALARM OFF Switch
9. BATTERY DOOR



• The configuration of your clock may differ somewhat from that shown in the illustration.

BATTERY INSTALLATION

Open the battery door at the bottom of the clock and insert the battery by following the correct "+" and "-" signs inside the battery compartment.

NOTE: remove the clear film label over the LCD panel, so LCD panel is visible.

TO OPEN THE FILP COVER

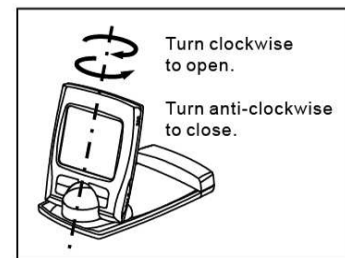
Open the filp cover and turn clockwise to open.

TO SET CALENDAR

Slide to CALENDAR. Press MONTH, DATE or YEAR buttons to set your desired calendar.

Remark: Incorrect calendar will be automatically adjusted

i.e. February 30 will be adjusted to February 1, April 31 will be adjusted to April 1.



TO SET TIME

Slide to TIME SET, press HR or MIN button to set your desired time.

TO SET ALARM

- Slide to ALM SET position, the "ALARM" sign will appear on the display. Press HR or MIN button to set your desired alarm time.
- Slide to ALARM ON position, the " () " sign will appear on the time display. The alarm function is activated.
- Slide to SNOOZE position to activate the Snooze Alarm.

"LOCK" FUNCTION

- After you set time and alarm time, slide to the LOCK position to protect the set time and alarm time against unnecessary changes caused by touch of buttons.

USING THE SNOOZE ALARM

Slide to SNOOZE position, the sign Zz will appear on the display. The SNOOZE function is activated. Once the alarm starts to ring, you can activate the snooze by pressing the SNOOZE/LIGHT button. The alarm will stop for 5 minutes and it will start to ring again.

To completely stop the alarm, slide the ALARM SWITCH to the OFF position. Alarm Duration: 1 minute

12HR / 24HR INTERNATIONAL TIME DISPLAY

- Simply press the 12HR/24HR button to choose your desired format.

TO SELECT °C OR °F TEMPERATURE READING

Press °C / °F button to choose your desired temperature reading.

USING THE BACKLIGHT

You may check the time anytime in the dark by simply pressing the SNOOZE/LIGHT button once. The display will light up with a soft glow that lasts for a while. You can read the time easily and clearly.

NOTE : Frequent use of this feature will affect battery life.

CARE OF YOUR CLOCK

- Avoid exposing your clock to extreme temperatures, water or severe shock.
- Avoid contact with any corrosive materials such as perfume, alcohol, or cleaning agents.